

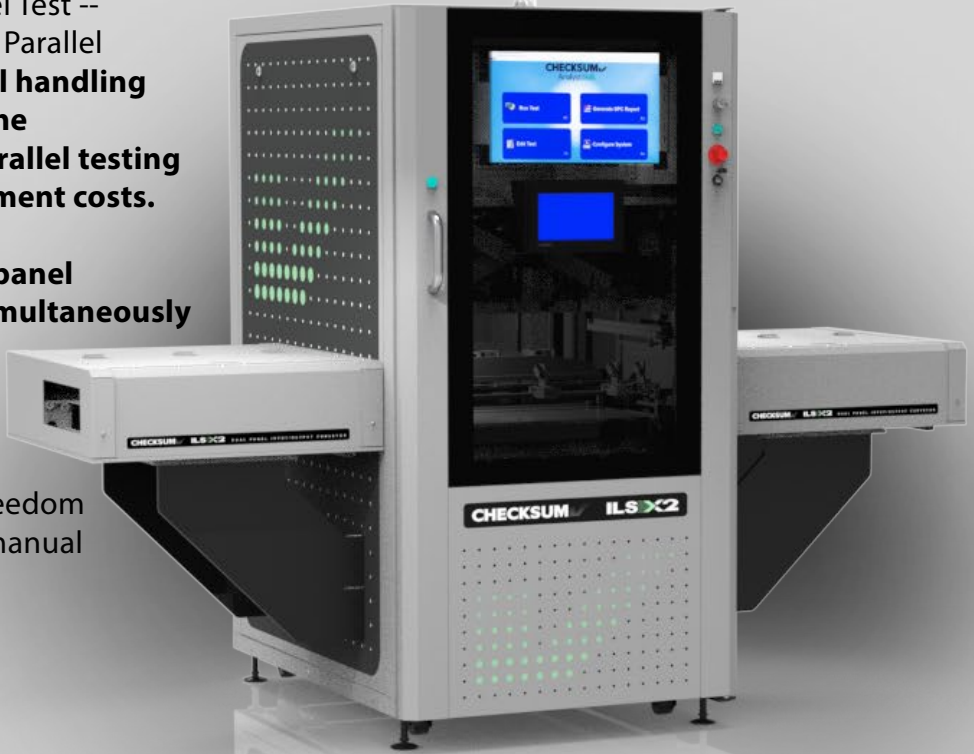


CHECKSUM ILS-X2™

Dual-Panel Automated Test System

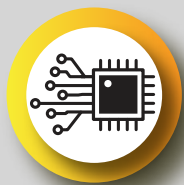
High-speed automated test system that runs the complete suite of CheckSum Parallel Test -- multi-core ICT, Multi-Writer ISP, and Parallel Functional Test (PFT).** **Dual-panel handling within a single fixture amplifies the throughput advantage of true parallel testing while reducing fixture and equipment costs.**

Flexible handling supports **single panel operation** as well as **two panels simultaneously within one fixture**, allowing you to switch between **single, parallel, and sequential test flows**. Fixture compatibility with our manual test systems gives manufacturers the freedom to move between automated and manual production test as needs change.



- **Up to 5,000 Test Points**
- **Automatic Width Adjustment**
- **Top and Bottom-Side Probing**
- **Fast, Easy Fixture Changeover**
- **Two Stop Positions (Dual-Panel)**
- **Supports all CheckSum Test Electronics**
- **Built-in 19" Rack for Third-Party Electronics**
- **Supports Single, Parallel, and Sequential Test Flows**
- **Touch-less Automation for In-Line or Off-Line Operation**
- **Optional Integrated Conveyors for Parallel Transport and Test of Two Panels**
- **Fixtures Compatible with Automated and Manual Test Systems (12KN and ILS-X2)**

Unmatched Parallel Test Capability



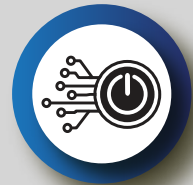
CHECKSUM ICT™

4X Faster In-Circuit Panel Test



CHECKSUM MultiWriter™

Program up to 384 Devices in Parallel

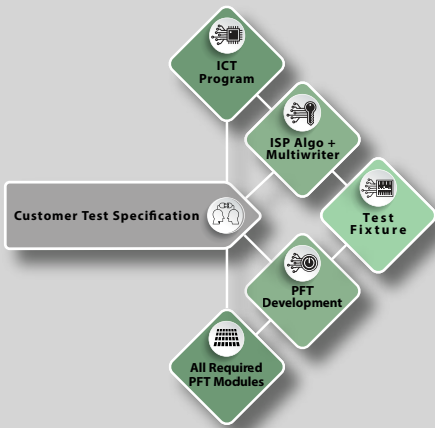


CHECKSUM PFT™

Functionally Test an Entire Panel of Boards in Parallel

The Power of Parallel™

Full Turnkey Test Solution Developed to Meet Your Unique Test Specifications



Engineered Test Fixture

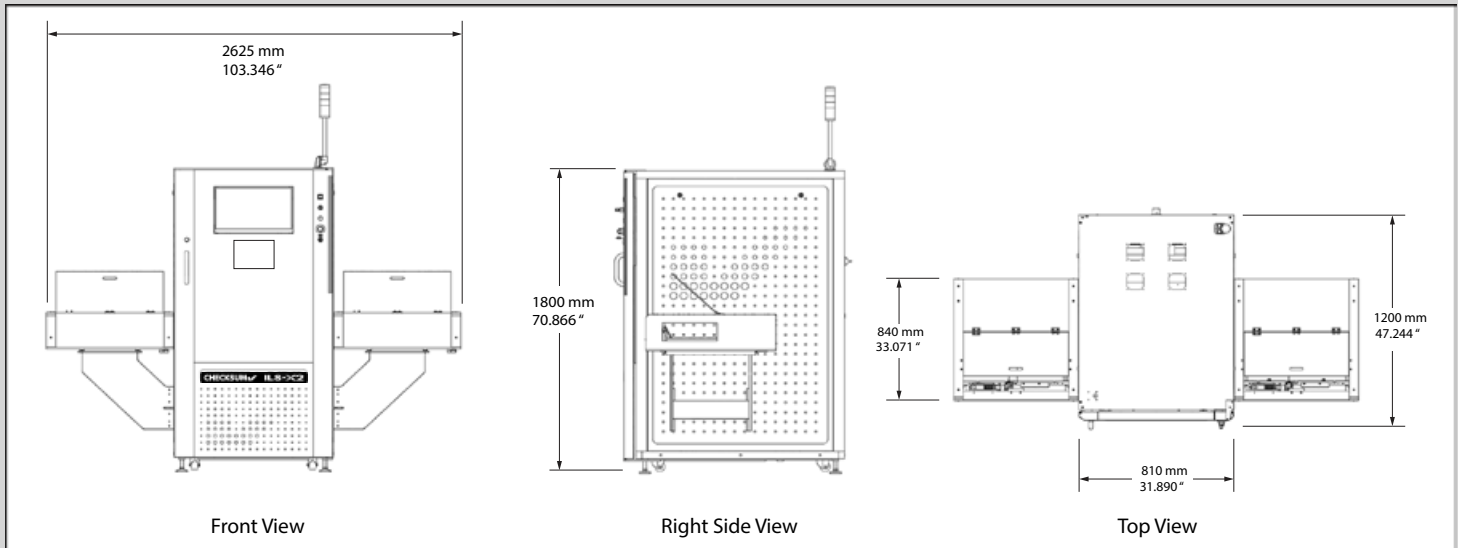


CheckSum ILS-X2 Integration

Specifications

System Specifications	
PCB Exchange Time	Typical 7.2 seconds (product dependent)
Press Force	10 kN
Contacting Method	Bottom, Top, Single and Dual Stage Contacting
Transport Belt Speed	100-800 mm/sec (3.937-31.496 inches/sec)
Transport Height	940-965 mm (37.008-37.992 inches) SMEMA
Transport Direction	L to R, R to L (to be specified at time of system order)
Fixture Change Time	< 3 min (top and bottom)
Energy Requirements	3 x 400 V + N, 10kVA for 10KN press
Compressed Air	6-20% bar, according to DIN ISO 8573 3.4.5
Manufacturing Specifications	
Standards	SMEMA, CE

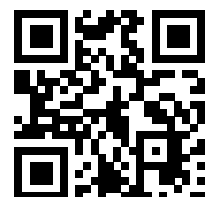
PCB Specifications	
Fixture KIT28	PCB probe area 24 x 13.2 inches (61 x 31.9 cm); up to 28 wiring blocks
Fixture KIT20	PCB probe area 16 x 13.2 inches (40.6 x 31.9 cm); up to 20 wiring blocks
Max Component Height	3.325 inches (845mm) top side / 2.92 inches (742 mm) bottom side
PBC Thickness / Weight	>0.8 mm (.031 inches) / Max 2.5 kg (5.512 lbs)
Power Specifications	
Supply Voltage USA	3-Phase 208 VAC + Neutral (120 VAC) + Ground - 60 Hz.
Supply Voltage Europe	3-Phase 400 VAC + Neutral (220VAC) + Ground - 50 Hz.
Technical Specifications	
Finish	RAL 7035 ESD Light Grey Powder Coat
Dimensions (L+D+H)	810w x 1200d x 1800h mm (31.890 x 47.244 x 70.866 inches)
Weight	ca 850kg (1873.929 lbs) excluding test fixture



CHECKSUM

6108 188th Street Northeast
Suite B800, Arlington, WA 98223

P +1.360.435.5510
info@checksum.com



www.checksum.com

© Copyright 2026 Checksum. All rights reserved.

*TestJet Technology is protected under U.S. Patent Nos. 5,124,660 and 5,254,953.

**Parallel Functional Test is patent pending.

CHECKSUM_ILS-X2_WEB_REV04082026