



CHECKSUM ILS-X2™

Dual Panel Automated Test System

CheckSum ILS-X2™ Automated Test System

CheckSum ILS-X2 Automated Test System.

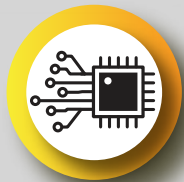
Advanced high speed automated test system supports the complete suite of CheckSums Parallel Test: ICT, ISP and PFT (Parallel Functional Testing).

Advanced handling capability supports up to two panels simultaneously in one fixture, effectively doubling the advantage of CheckSums Parallel Test. Fixture compatibility with our manual test system, provides flexibility for manufactures to switch between automated and manual production test.



- **Supports all CheckSum Test Electronics**
- **Top and Bottom Probing**
- **Fast and Easy Fixture Changeout**
- **10 kN Press Force**
- **Automatic Width Adjustment**
- **Two Stop Positions for Dual Panel Testing**
- **Supports CheckSum KIT20 - KIT28 12KN Fixtures**
- **Supports 3rd Party Test Electronics with Built-In 19" Rack**
- **Flexible Automated Touchless Test Supports In-Line or Off-Line Operations**

Unmatched Parallel Test Capability



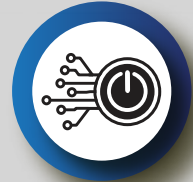
CHECKSUM ICT™

4X Faster In-Circuit
Panel Test



CHECKSUM MultiWriter™

Program up to 384
Devices in Parallel



CHECKSUM PFT™

Functionally Test an Entire
Panel of Boards in Parallel

The Power of Parallel™

Full Turnkey Test Solution Developed to Meet Your Unique Test Specifications

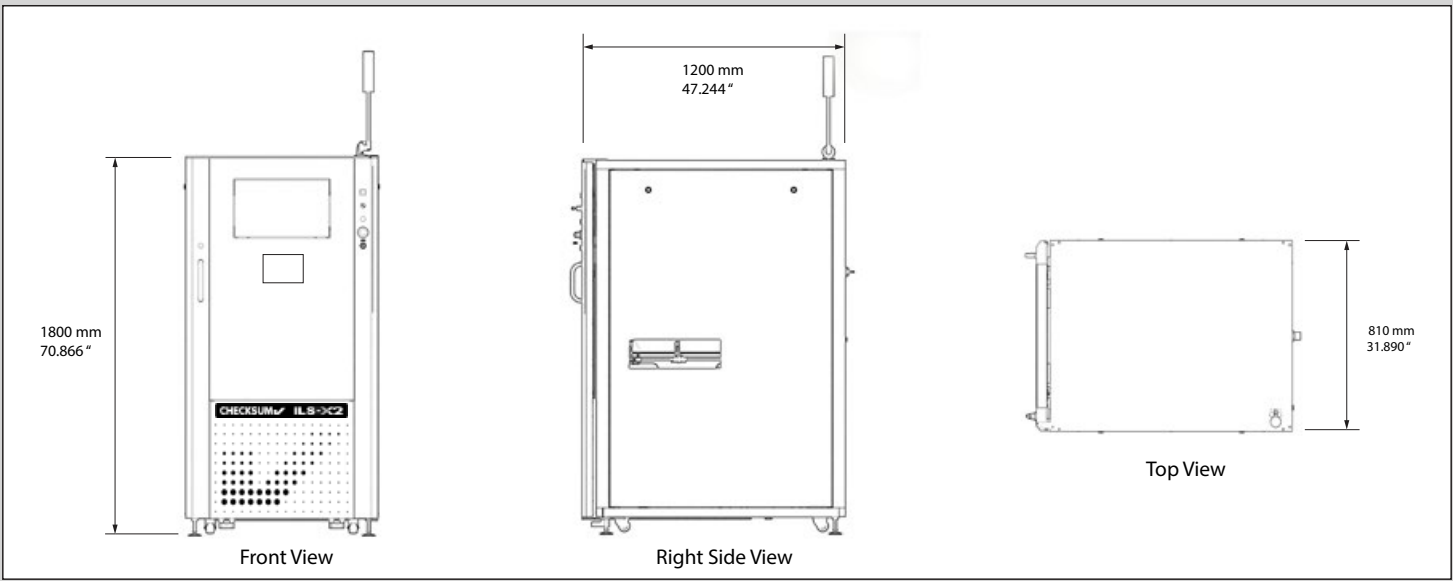


Specifications

System Specifications	
PCB Exchange Time	Typical 7.2 seconds (product dependent)
Press Force	10 kN
Contacting Method	Bottom, Top, Single and Dual Stage Contacting
Transport Belt Speed	100-800 mm/sec (3.937-31.496 inches/sec)
Transport Height	940-965 mm (37.008-37.992 inches) SMEMA
Transport Direction	L to R, R to L (to be specified at time of system order)
Fixture Change Time	< 3 min (top and bottom)
Energy Requirements	3 x 400 V + N, 10kVA for 10KN press
Compressed Air	6-20% bar, according to DIN ISO 8573 3.4.5
Standards	SMEMA, CE

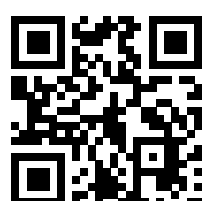
PCB Specifications	
Fixture KIT28	PCB probe area 24 x 13.2 inches (61 x 33.5 cm); up to 28 wiring blocks
Fixture KIT20	PCB probe area 16 x 13.2 inches (40.6 x 33.5 cm); up to 20 wiring blocks
Max Component Height	3.325 inches (845mm) top side / 2.92 inches (742 mm) bottom side
PBC Thickness / Weight	>0.8 mm (.031 inches) / Max 2.5 kg (5.512 lbs)
PCB Probe Area	40.6 x 33.5 cm (16 x 13.2 inches); up to 20 wiring blocks

Technical Specifications	
Finish	RAL 7035 ESD Light Grey Powder Coat
Dimensions (L+D+H)	810 x 1200 x 1800mm (31.890 x 47.244 x 70.866 inches)
Weight	ca 850kg (1873.929 lbs) excluding test fixture



6108 188th Street Northeast
Suite B800 Arlington, WA 98223

P +1.360.435.5510
info@checksum.com



www.checksum.com

© Copyright 2024 Checksum. All rights reserved.

*TestJet Technology is protected under U.S. Patent Nos. 5,124,660 and 5,254,953.

MultiWriter Technology is protected under U.S. Patent No. 7,802,021. Parallel Functional Test is patent pending.

CHECKSUM_ILS-X2_WEB_REV04302024