

# CheckSum Board Viewer



## Features

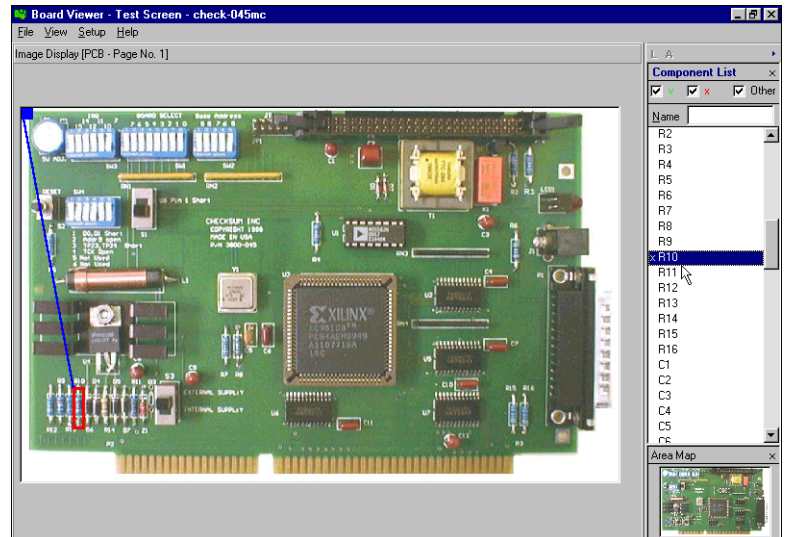
- Reduce Repair Time
- Show Location of Failed Components
- Find Test Probes by Number or Location
- Find Components on a PCB
- Visual Images of PCB, Schematics, Probes

The CheckSum Board Viewer software reduces the repair costs by showing failures on the tested assembly in several views. The Board Viewer software lets you view a photographic image of the assembly, the schematic and the test fixture probe map. A major benefit for repairing assemblies is the ability to quickly locate failed components. In addition, using stored failure data, failed components can be located at a repair station after the board is tested. Use the probe map view to find the location of a faulty spring probe.

The Board Viewer software can be purchased separately and installed on an existing CheckSum Visual MDA Test System.

Typical uses:

- During board test, a test station operator needs to adjust a specific component. The Board Viewer can aid the test station operator by highlighting the component on the UUT (Unit Under Test).
- During board test, the Board Viewer can aid the test station operator pinpoint problems by highlighting failed components on the UUT.
- During board test, a user-defined image can be displayed for visual instructions.
- Using the test results file after the test (or off-line), the Board Viewer can aid the repair process by highlighting failed components on the UUT.



*Resistor R10 Failed and Highlighted in Red*

Following are the steps needed to use the Board Viewer to highlight components on a UUT being tested:

1. For each type of view, you need a graphic image (e.g., photograph of the board, schematic, probe map) and the Visual MDA test program.
2. Using the Board Viewer editor, interactively define the locations of the components in each of the graphic images.
3. Using the Board Viewer, assign the default settings such as PCB (photograph of the UUT) as the default image, highlight failed components, display highlighting at end of the test, and control of the windows used by Visual MDA and Board Viewer.
4. Save this information (steps 2 and 3) with the test program.
5. Run the test program with CheckSum Visual MDA and watch the Board Viewer show the Passed/Failed components!



## Functions / Features

- Components highlighted in color for Pass/Fail
- Display a photographic image of the PCB with failed components highlighted
- Display the schematic of an assembly with failed components highlighted
- Display the fixture test points on a probe map
- Create annotation on top of the PCB assembly image to locate and identify components
- Instantly find components and test points
- Print to any Windows compatible printer
- Search for test probe numbers and net names
- Handy, interactive editing window allows image annotation generation in a few hours
- Accepts BMP, JPEG, PNG, PCX, TIFF (Uncompressed and PackBits compression), WMF input image files
- Accepts ASCII text file for probe locations
- Reads CheckSum SPC or Test Results files for off-line Failure Analysis
- Predefined views for PCB, Schematic, and Probe Map
- Accepts user-defined views
- Compatible with Windows 95, 98, and Me

### Schematic View

Knowing that resistor R10 failed and where the part is located on the assembly makes the repair quick and easy. You may also want to know what function resistor R10 performs. The schematic view shows where R10 is used in the circuit.

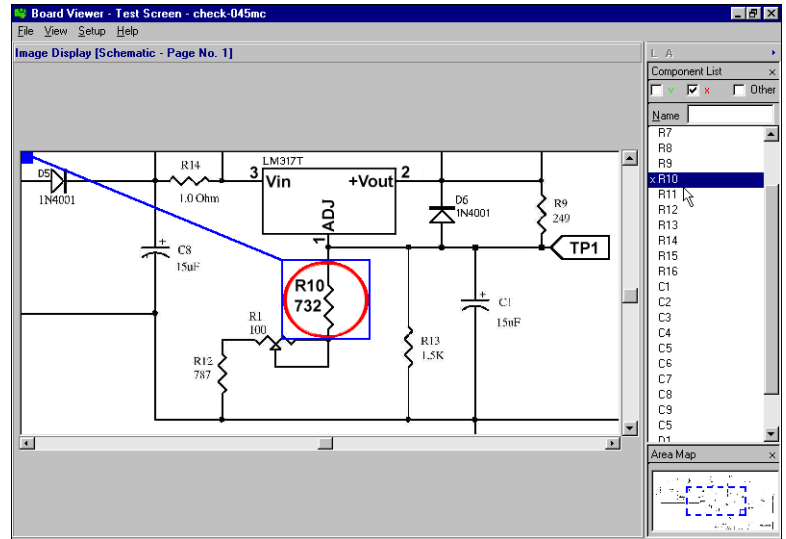
### Probe Map View

The test probes on the fixture need to make good connection to the assembly. If you need to locate a test probe, use the probe map view and click on the test probe of interest to find its name/number. Conversely, click on a name/number to see the location. Scroll and zoom in for a clear view of the each test point.

### Keypad or Mouse Controls

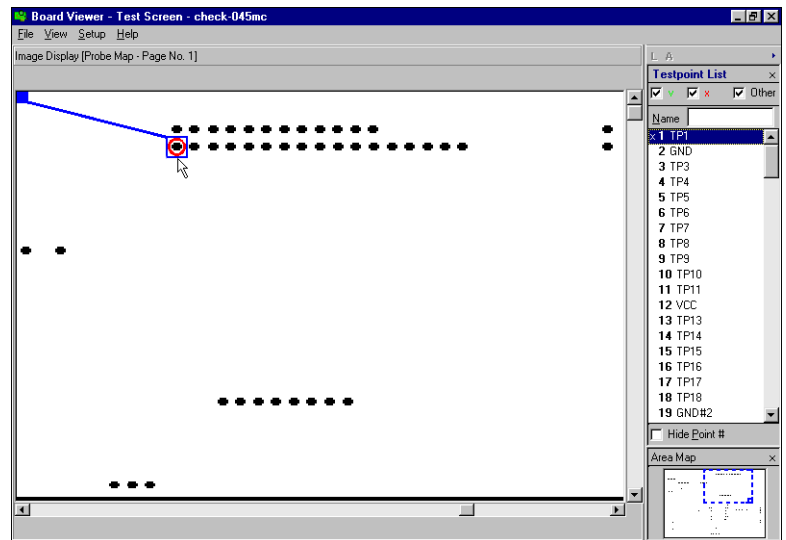
The CheckSum keypad, the Analyst series front panel keys, standard keyboard, or mouse can be used to control the different views.

### Schematic View



*Resistor R10 Failed and Highlighted in Red*

### Probe Map View



*Fixture Testpoint #1 on Net TP1 Highlighted*



**CheckSum, Inc.**

P.O. Box 3279

Arlington, WA 98223

(360) 435-5510 FAX (360) 435-5535

Email: [sales.support@checksum.com](mailto:sales.support@checksum.com)

Web Site: [www.checksum.com](http://www.checksum.com)

Specifications Subject to Change (5/2001)