

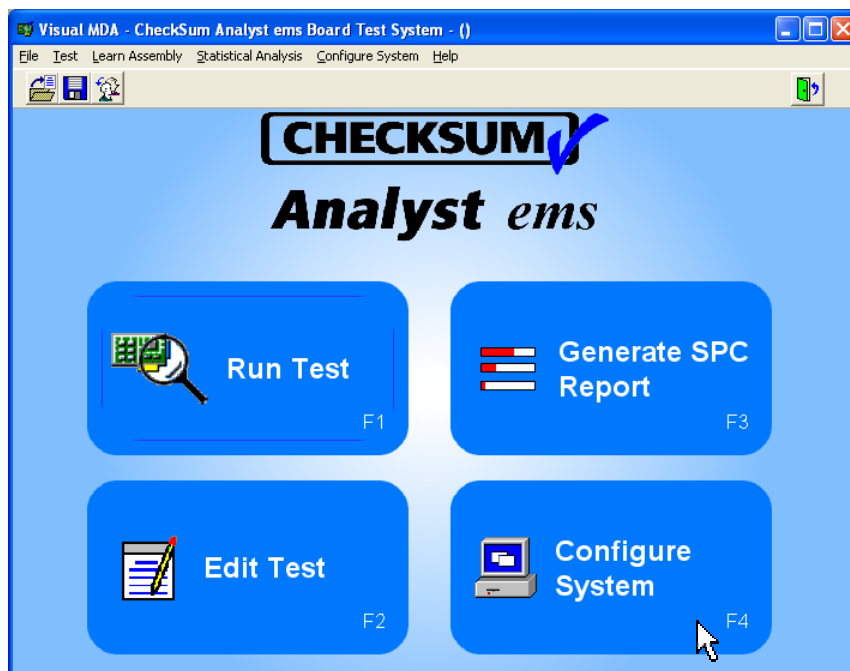


Test System Configuration with Windows 98/XP/2000

CheckSum test systems can be configured with numerous modules of various types.

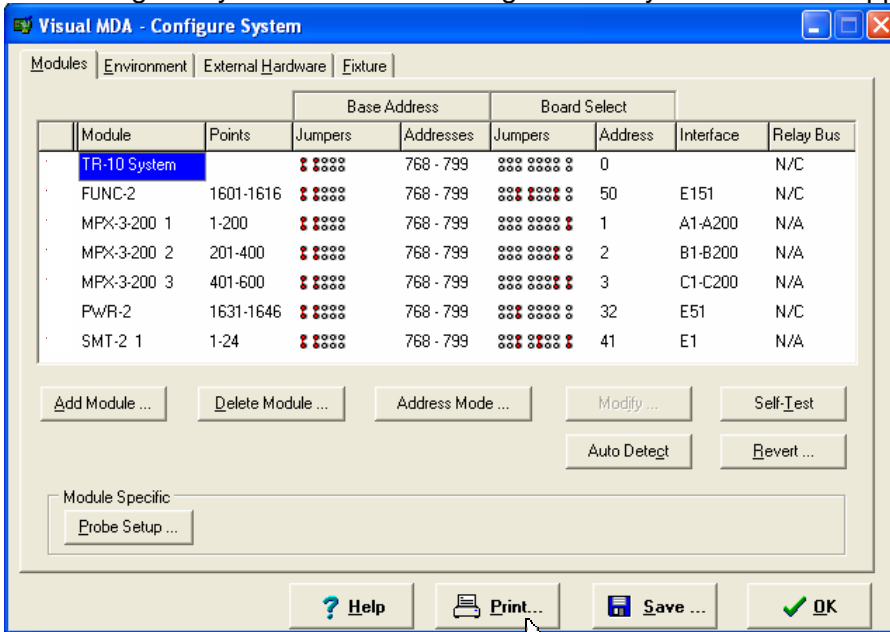
To identify the modules in a windows-based test system and create a configuration file, follow the steps below.

1. Start the test system software so the four big blue buttons are shown (Main Window):



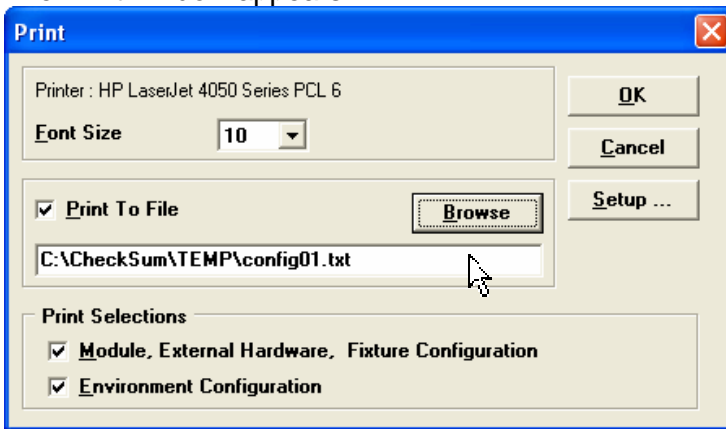
2. Click the "Configure System" blue button or press the F4 function key

3. The Configure System window showing the test system modules appears:



4. Click the **Print...** button at the bottom of the Configure System window

5. The Print window appears:



6. In the pop-up Print window: Click to select the check box to "Print to File"
7. Click the **B**rowse button and select a location to save the file, such as **C:\CheckSum\TEMP**
8. Type in a file name such as "**config01.txt**"
9. Make sure the two check boxes for the Print Selections are checked:
 - " Module, External Hardware, Fixture Configuration "
 - " Environment Configuration "
10. Press the OK button

The file **config01.txt** can be printed for your documentation.

This text file can be emailed along with any questions you may have about the test system configuration.

A typical printed configuration file has the following information:

=====
System Configuration

Testing Facility: CheckSum
System ID : Analyst ems #9
Test System: CheckSum Analyst ems
Software Version: 6.0i8
Report Date: 19 Aug 2006
Time: 7:29

=====
HARDWARE :

Module	Points	Jumpers	Addresses	Sec	Add.	Conn.	Rel Bus
TR-10 System		1 1000	768 - 799	0			N/C
MPX-3-200 1	1-200	1 1000	768 - 799	1		A1-A200	N/A
MPX-3-200 2	201-400	1 1000	768 - 799	2		B1-B200	N/A
MPX-3-200 3	401-600	1 1000	768 - 799	3		C1-C200	N/A
MPX-3-200 4	601-800	1 1000	768 - 799	4		D1-D200	N/A
PWR-2	1631-1646	1 1000	768 - 799	32		E51	N/C
SMT-2 1	1-24	1 1000	768 - 799	41		E1	N/A

External Hardware

Test Report Device : CRT
Form Feed on PrintOuts : After
Blank Lines at end of Reports : 0
Footswitch Attached To : None
Beeper : On

Fixture

Fixture System : TR-9-2000-QC

ENVIRONMENT :

Configure Reporting

SPC Logging

- Statistics Data Logged : On
- Statistics Data Path : C:\CheckSum\STATS\
- Operator Name Logged : On

Automatic

- Test Results Report
* Automatic Test Result Report enabled : Off
- Batch Report
* Automatic Batch Report enabled : Off

Test Results

- Report Width : 80
- 80 Column Format
 - Field Name Field Width
 - 1.From Point Number : 4
 - 2.From Point Name : 8
 - 3.To Point Number : 4
 - 4.To Point Name : 8
 - 5.Test Type : 5
 - 6.Test Range : 5
 - 7.Test Title : 12
 - 8.Low Limit : 7
 - 9.High Limit : 7
 - 10.Measured Value : 8
 - 11.Pass / Fail : 1
 - Total (including spaces): 79
- Max 80 Column Report Lines Per UUT : 0
- 40 Column Format
 - Field Name Field Width
 - 1.Test Title : 12
 - 2.Measured Value : 8
 - 3.Pass / Fail : 1
 - 4.From Point Number : 4
 - 5.From Point Name : 8
 - 6.To Point Number : 4
 - 7.To Point Name : 8
 - Total (including spaces): 51
- Max 40 Column Report Lines Per UUT : 0
- Report Header
 - * Dashed Lines : On
 - * Test Title : On
 - * Test Facility : On
 - * System ID : On
 - * Assembly Name : On
 - * Operator Name : Off
 - * Total Failures : On
 - * Date / Time : On
 - * Model ID : On
 - * Column Headers : On
 - * UUT Serial Number : On
 - * Batch ID : On
 - * Special Line : None
- Operator Entry
 - * Get UUT Serial Number : NO
 - * Get Batch ID : NO

Batch

- Report Width : 80
- Report Header
 - * Special Line : None

General

- Facility Name : CheckSum
- System ID : Analyst ems #9
- Configure Page Header
 - * Report Type : On
 - * System ID : On
 - * Date / Time : On
 - * Page Number : On
- Viewer : notepad.exe

Test Program

- Show Details on Test Program
 - * CONT Test : On
 - * IC Test : On
 - * FixCh Test : On
- Report Header
 - * Special Line : None

Directories/Locations

Test Programs	: C:\CheckSum\SPECFILE
Test Results	: C:\CheckSum\REPORTS\TEST\
Statistics Data	: C:\CheckSum\STATS\
Automatic Batch Report	: C:\CheckSum\REPORTS\AutoBatch\
CAD Data	: C:\CheckSum\CAD
RunT Programs	: C:\CheckSum\SPECFILE\SUBS
Temporary File	: C:\CheckSum\TEMP\
Boundary Scan Driver	:
Boundary Scan Report Filter	: