

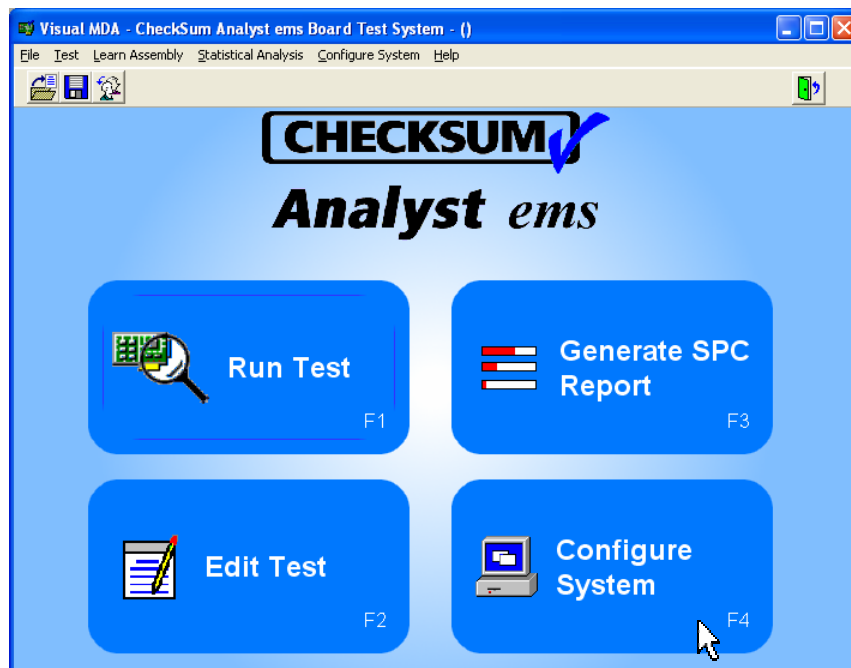


System Self-Test with Windows 98/XP/2000

CheckSum test systems can be self-tested with numerous modules of various types. The self-test provides several basic functions. It calibrates the system speed so that the System will operate correctly in a wide variety of processor environments. It then checks the modules in your system to ensure that they are functional. Finally, it calibrates the modules, as appropriate, to on-board calibration standards.

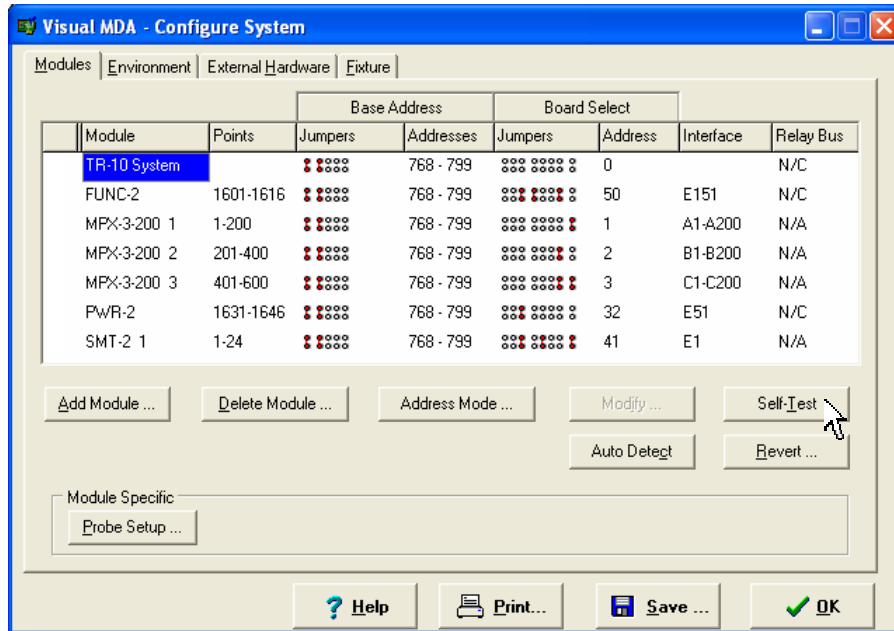
To identify the modules in a windows-based test system and do a self-test, follow the steps below.

1. Start the test system software so the four big blue buttons are shown (Main Window):



2. Click the "Configure System" blue button or press the F4 function key

3. The Configure System window showing the test system modules appears. The following is an example and your configuration may be different.



4. Select each module by clicking on the module name, starting with the System module at the top of the list. Then click the **Self-Test** button. It is recommended that you self-test all the modules in the configuration table in descending order (top to bottom).

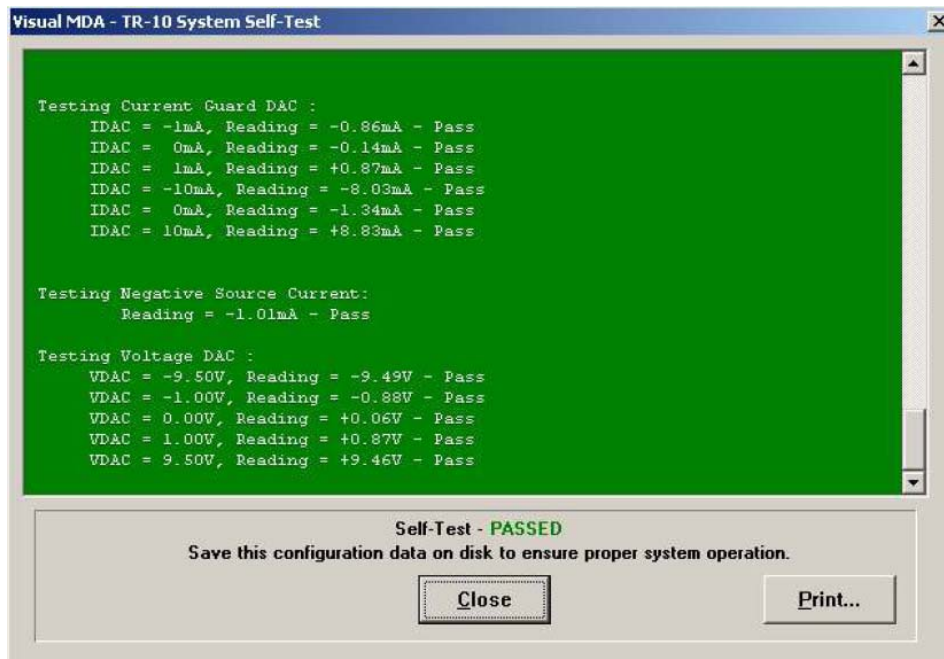
Note

Follow the instructions provided for each self-test, such as to remove any connections to the module cables or install/remove shorting items to the module cable. Otherwise, you may get incorrect test results.

5. The self-test window shows the progress. For example, for the System module “Self-Test in Progress ...” window appears:

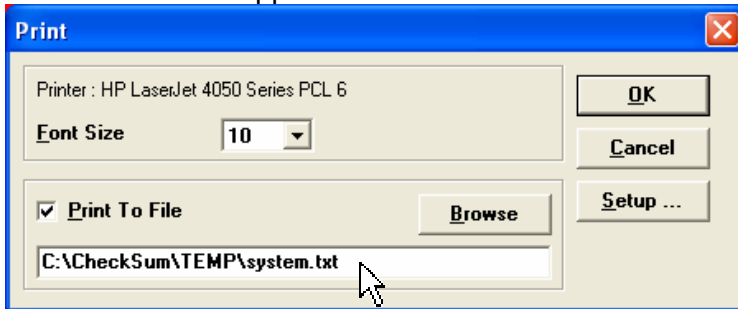


6. After the self-test finishes, the following “PASSED” window appears:

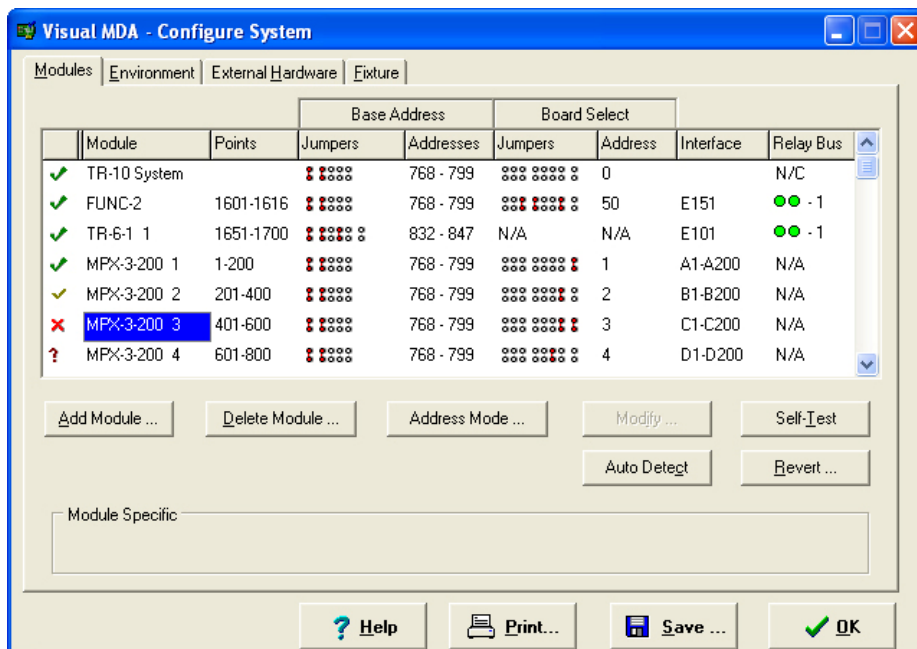


7. If the self-test passes, click Close button to close this window and return to the main configuration table window.

8. If self-test fails and you want to send the self-test results to CheckSum for assistance, click the **"Print..."** button and print the self-test results to a file for future reference.
9. The Print window appears:



10. In the pop-up Print window: Click to select the check box to **"Print to File"**.
11. Click the **Browse** button and select a directory to save the file, such as **C:\CheckSum\TEMP**
12. Type in a unique file name, such as **system.txt**
13. Repeat steps 4-12 for each module you self-test.
14. After the module self-test, in the left column, you will see a green check to indicate that the module passed, or a red X that shows it failed. A smaller check mark indicates the self-test was canceled before it finished completely and no failure was found. The "?" indicates the module was not detected which can be due to the module not installed in the chassis, the module is not addressed properly, or the module is not working properly.



15. After all the modules are tested, press the **Save...** button to save the configuration. You can also Print the configuration table. Finally, press the **OK** button to exit the configuration window.